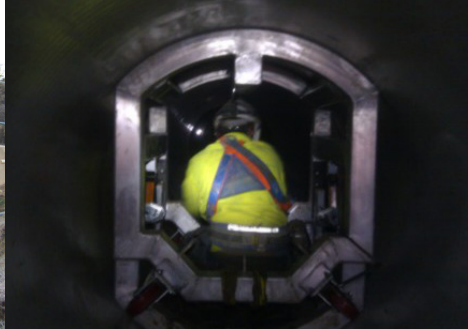


case study: Back Creek Syphon



project: Back Creek Syphon

client: Interflow

location: Victoria

product: Flowtite GRP Pipe & Fittings

manufacture & supply: 600m of DN1300 PN6 SN10000 in 1m, 2m, 3m, 4m and 6m lengths

value: < \$1m

year of project: 2011

description: The project consisted of relining of a concrete syphon, maintained by Coliban Water, that was initially installed in the 1920's. Flowtite was chosen due to its light weight but high stiffness allowing an easier install inside a complicated piping profile without having to dig up the existing concrete pipeline to gain access. The GRP liner will provide a corrosion barrier well into the next century.

